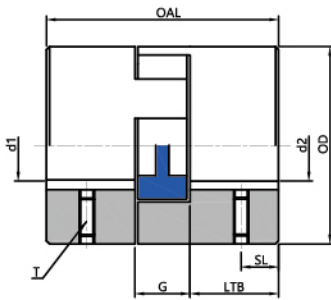
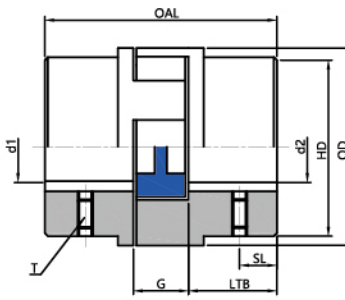


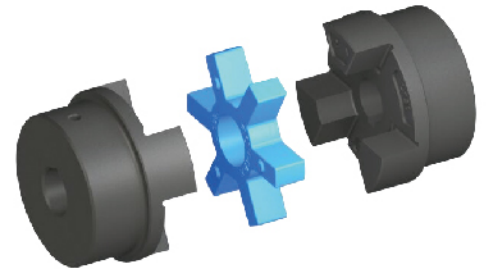
- Used standard elastomer.
- Suitable for a variety of industrial applications, providing shaft to shaft connections.
- Not suitable for backlash-free drive with heavily reversing operation.
- Torsional flexibility, zero maintenance.
- Light mass, small moment of inertia.
- Damping impact and reduce vibration.
- Axial plug-in, fail-safety.
- Good dynamic Properties.
- For installation, operation and maintenance instructions, refer document No. 04.101.



Type 1 Fig04.22



Type 2 Fig04.23



Powder Metallurgy-FC-0208-50														
Size	Type	Rated Torque Nm			Dimension mm								Screw	
		NBR	TPU	Hytrek	d1-d2	OAL	LTB	G	OD	HD	SL	T	T _A	
L035	1	0.4	-	-	3-9	20.57	6.86	7.11	16.00	16.00	3.30	M3	0.5	
L050	1	3.0	4.5	5.6	6-16	43.43	15.75	12.19	27.43	27.43	7.87	M4	2.0	
L070	1	4.9	7.3	12.9	6-19	50.29	19.05	12.19	34.54	34.54	9.65	M6	5.0	
L075	1	10.2	15.3	25.6	6-22	54.10	20.83	12.70	44.45	44.45	7.87	M6	5.0	
L090	1	16.3	24.4	45.3	6-25	54.61	20.83	13.21	53.59	53.59	11.18	M6	5.0	
L095	1	21.9	32.9	63.4	11-29	63.75	25.40	13.21	53.59	53.59	11.18	M8	10	
L099	1	35.9	53.9	89.5	11-30	72.14	26.92	18.03	64.52	64.52	11.18	M8	10	
L100	1	47.1	70.7	128.0	11-35	88.39	35.05	18.03	64.52	64.52	11.18	M8	10	

Gray Iron HT250													
Size	Type	Rated Torque Nm	Rated Torque Nm	Rated Torque Nm	d1-d2	OAL	LTB	G	OD	HD	SL	T	T _A
L110	1	89.5	134.0	256.0	16-42	107.19	42.67	22.35	84.33	84.33	19.05	M8	10
L150	1	140.0	210.0	419.0	16-48	114.30	44.45	25.40	95.25	95.25	19.05	M8	10
L190	2	195.0	293.0	529.0	19-54	123.44	49.28	25.40	114.30	101.60	22.35	M12	45
L225	2	264.0	397.0	704.0	19-67	135.64	55.37	25.40	127.00	107.95	25.40	M12	45
L276	2	533.0	-	-	22-73	198.63	79.25	40.13	156.97	127.00	39.62	M12	45

- D is the bore diameter, the metric cylindrical bore executes GB3852-2107 standard, tolerance H7, flat keyway, also executes GB/T1095-2003 standard, tolerance JS9. The inch bore implements the AGMA9002-C14 standard, the bore is a clearance fit, and the keyway is a commercial grade.
- Hexagon socket set screw with cup point, comply with GB/T80-2007, hardness level 45H. TA indicates the tightening torque (unit: Nm).
- Taper bore, spline bore details, please contact RUVJAX